

**INTER-AGENCY CONTINGENCY PLAN FOR PRE- AND  
POST-ELECTION RESPONSE, 2012 / 2013**

**Prepared by the  
Inter-Sector Working Group**

**DRAFT**

## Table of Contents

### 1. Introduction

Kenya is scheduled to conduct national general elections on the 4th march 2013. These elections will be the first elections since the adoption of the new Constitution in August 2010 which provides for the devolution government to 47 counties. Elections in 2013 will determine county as well as national office holders.

In the past, Kenya has experienced violence during campaign periods, as well as during and after elections themselves. This has led to the loss of life, injury, displacement, and destruction of property and livelihoods. Already in 2012, incidences of inter-communal conflict and displacement, as the result of multiple factors, have been seen in Isiolo, Moyale, Wajir, Mandera, Mombasa and Tana River. Whilst the priority is to support peace building and prevention efforts, previous outbreaks of violence have demonstrated the importance of planning for potential humanitarian response activities.

The humanitarian contingency plan is one of four pillars of the overall national contingency plan for election, coordinated by the National Disaster Operation Center, which also includes the pillars on security, prevention/early warning and mass casualty. The plan elaborated below is based on previous contingency planning efforts (most notably contingency planning conducted in 2010 in the run up to the constitutional referendum) and consultations both at national and sub national level.

The plan covers the period from September 2012 to April 2013 on the assumption that elections will be held on 4 March 2013. It is designed to be flexible and continuously updated to accommodate new developments and additional analysis.

### 2. Background

The results of a disputed presidential election in 2007 led to a violent political crisis in Kenya, most often referred to as the Post-Election Violence (PEV). Approximately 1,300 Kenyans lost their lives, significant property was destroyed and about 600,000 people were internally displaced.

The violence was manifested in multiple forms; however it is important to highlight the anecdotal and qualitative (narrative) evidence documented by the Commission of Inquiry on PEV (CIPEV)<sup>1</sup>, on the upsurge and rampant sexual violence and other forms of Gender Based Violence (GBV) and Sexual exploitation and Abuse (SEA) to both men/boys and women/girls during the period when law and order broke down. Women and girls were the worst affected as a result of their perceived lesser status in the society and these incidences have had a spiral effect on their lives such as abandonment by spouses, psychological trauma, loss of livelihoods

---

<sup>1</sup> The Judge Waki commission- which was funded by the GOK and the UNDP managed Trust Fund for national Dialogue and Reconciliation to investigate the facts and circumstances of the violence and make recommendations.

and contracting HIV and Aids. Widespread separation of children was reported. In total, 5,769<sup>2</sup> children were reunified as part of intensive family tracing and reunification efforts, however, many of the thousands of separated children who were hastily placed into CCIs during PEV remained there.

A large scale humanitarian response was launched by local organizations led by the Kenya Red Cross Society, the government of Kenya and the international community. On the international side, UN and NGO presence was largely development in nature and response systems needed to urgently be put in place. To facilitate the mobilization of response capacity the ERC added the designation of Humanitarian Coordinator to the Resident Coordinator function and the cluster approach was implemented to support coordination. A flash appeal was launched in January 2008. According to the financial tracking service humanitarian donations to the 2008 Kenya Flash appeal were \$137 million with the largest amounts being channeled to food assistance and shelter and non food items. Whilst some level of preparedness was undertaken by the Kenya Red Cross, the country was largely unprepared for the unprecedented wave of violence that gripped the country in the weeks and months that followed the elections. The experience of 2007/08 highlighted clearly the necessity for all partners to engage with peace building actors and to prepare adequately in case of a widespread emergency.

Following the PEV, the Kenya National Dialogue and reconciliation (KNDR) agreements which set out a framework for action provided the opportunity to begin the process of reconciliation to reforms at different levels. The framework identified four critical areas (agenda) to end the immediate crisis and secondly to establish systems and institutions for longer term democratic stability. The fourth agenda (Agenda 4) aims at addressing longer term constitutional, legal and institutional reforms, tackling poverty and unemployment, inequity and regional development imbalances, consolidating national unity and cohesion, and addressing impunity, transparency and accountability.

The most critical of these reforms was a new constitution. A successful and peaceful referendum process in August 2010 marked a significant milestone in the reform journey since independence<sup>3</sup>. The constitution implementation is ongoing and a number of bills have been passed (such as the County Government Act and the Public Finance Management Act). The new constitution proposes the establishment of a devolved government, which should come into effect with the next general elections. This therefore means completion of all legal, financial and institutional arrangements before the elections including establishment of operational frameworks.

The new constitution proposes a new governance structure that increases space for representation at the national and county levels (National Assembly, Senate and County governments). Competition and positioning for representation in these positions at a sub national level is seen as one of the major underlying causes and contributing factors to the current tensions involving various communities in the country. A case in point is the spate of 2011-12 conflicts in Isiolo, in Tana River, Mandera, Moyale, and Samburu which have involved a number of different ethnic groups. This has resulted in deaths, displacement, and destruction

---

<sup>2</sup> UNICEF

<sup>3</sup> The Kenya National Dialogue and Reconciliation (KNDR) monitoring project, January 2012 quarterly review report. South Consulting.

and looting of property including schools. In 2012 an estimated 450 people were killed and 120,000 people were displaced in inter-communal conflicts. Whilst it is not possible to attribute the conflicts to a single factor, the competition for representation at county level has frequently been identified as key factor. From a gender perspective, conflicts of these nature increase risks and vulnerabilities particularly for women and girls and curtails a protective environment and increases incidences of sexual violence and contributes to lost chances and opportunities for women and girls in socio cultural and economic spheres.

On the other hand, while substantive progress has been made in administrative reforms in security, judicial and electoral reforms, there has been little progress towards a national criminal investigation of the key perpetrators of the PEV crimes. The matter was referred to the International Criminal Court (ICC) and the outcomes; the confirmation of charges against four individuals was announced on the 23<sup>rd</sup> of January 2012. The ICC is expected to expedite the process after the general election and then start hearings at the Hague based court. This has contributed to polarization and alignment of communities on ethnic grounds, which may propagate a potential risk of inter-ethnic conflicts as we go towards the next general elections. On the other hand it is important to note that unfortunately the gender based crimes committed during the 2007 PEV, where adequate and admissible evidence was availed to the justice system have never been addressed locally to date.

To deal with the reconciliation process, the Truth Justice and Reconciliation Commission (TJRC) was established in 2009. TJRC's mandate is to establish an accurate, complete and historical record of violations and abuses of human rights and economic rights on persons by the state, public institutions and holders of public office since independence to 2008. This process has however been hampered by partisan interests and in-fighting within the commission due to credibility questions on the leadership which have in turn resulted in delays in the finalization and publication the commission's final report. The TJRC has requested the Parliament an extension for delivery of the final report which was expected for the 3 of June 2012.

From the institutional review perspective, various commissions and independent bodies have been established or reconstituted as part of the institutional reform process. To date these include the Salaries and Remuneration Commission, the Independent Electoral and Boundaries Commission (IEBC), the Gender and Equality Commission, the Commission on Administrative Justice and the Ethics and Anti-corruption Commission. Of critical importance to the upcoming elections is the IEBC and the processes involved in election preparations.

The Independent Electoral and Boundaries Commission (IEBC) launched its report on the delimitation of boundaries across the country. This has identified the boundaries for various constituencies, create new boundaries and revise others, ahead of the country's general elections in early 2013. The IEBC's task of determining the boundaries of various constituencies after the allocation and public hearings has faced stiff opposition from the members of the public and some members of parliament despite the fact that the report had been passed by Parliament. The hearings have been laden with conflict in some areas. The Commission's final report was made public in April 2012 and it still continues to draw opposition from the public and many cases have been filed in court in this regard. This concern serves as a potential cause for conflict in the highly contested areas.

Another contentious issue is the resettlement of the Internally Displaced Persons as a result of the PEV. Over 660,000 people were said to have been displaced with over half displaced in the Rift Valley Province. While more than 300,000 families have returned to their farms, and their ethnic homelands in Central, Nyanza and Western Provinces, some have sold the homes they were forced to flee from and bought land elsewhere for resettlement. Whilst the Government has committed to resettling all IDPs prior to elections, there remains concern over the vulnerability of potential returnee communities in the current heightened political environment.

The impact of the 2008 post election violence continues to affect many families and highlights the need for a long-term perspective to be considered within current contingency plans. A recent report<sup>4</sup> profiling over 2,400 children on the streets in the Rift Valley showed a strong link between the PEV and children joining the street, with 37% of children profiled having been displaced by PEV. It was notable that children arriving on the streets in 2011 continued to cite PEV as a push factor.

With the passing of a new political parties act, political parties will have to demonstrate regional and ethnic diversity in their composition. This provision seeks to remedy the situation by dictating visible ethnic representation in all spheres of government and public service appointments. However the reality being witnessed is that the parties are still strongly aligning to ethnic groupings. The ethnic make-up of political parties and ethnocentric politics in the recent past has been a cause for concern, as these have been used to manipulate and exacerbate ethnic tensions<sup>5</sup>.

Other groups such as the outlawed Mombasa Republican Council (MRC) continue to emerge and have increasingly made demand for the secession of the coastal region from Kenya to create a country based at the Coast province. They claim successive governments have not done much to alleviate poverty at the coast. Despite Government's reiteration that Kenya is one, the MRC have threatened to scuttle plans to hold elections in the coastal region and disrupted a mock elections and a civic education exercise in this region by the Independent IEBC.

It is notable to point out that, Kenya is emerging from a state of ethnic conflicts, insecurity and poverty among others and these compounded by the high cost of living and the 2011 Horn of Africa drought crisis that affected vast regions in the north and north east of Kenya has added to these challenges. The interplay of a number of triggers and risk factors is contributing to an elevated risk of localized violence. In recent months there has been multiple incidents of violent confrontation and consequent displacement. These have affected Isiolo, Moyale, Mandera, Wajir, Tana River and Mombasa. Since the beginning of 2012, it is estimated that as of 21 November 412 people have been killed, 258 injured and 112,000 people have been displaced in localized conflicts.

Based on this prevailing context, the humanitarian community, the Kenya Red Cross, and the Government of Kenya have engaged in humanitarian contingency planning. This CP aims at

---

<sup>4</sup> Save the Children: *The Chronic Urban Emergency in Rift Valley Kenya - A Generation Out of Place. Report from Profiling Children Connected to the Streets in Rift Valley Province (2012)*

<sup>5</sup> Bobby Mkangi and Nyambura Githaiga, institute for security and studies paper 232, February 2012. Kenya's new constitution and conflict transformation

outlining assumptions, scenarios and potential response arrangements in support of the national response.

### **3. Key Assumptions**

- UN and NGO will concentrate their efforts in the prevention and support to peace building but also are to be prepared in case of outbreak of violence.
- The Government of Kenya will spearhead response in the eventuality of any outbreak of violence.
- The Kenya Red Cross Society is the designated lead agency and will co-lead (with DC's and PC's) operational coordination in the field.
- The HC with OCHA support will support the Government of Kenya in the coordination of the UN/NGO response.
- Focal point organisations in the eight designated hubs will provide support to coordination at a subnational level.

### **4. The Humanitarian Scenarios**

As part of an in-depth analysis produced by the National Steering Committee on Peace-building and Conflict Management (NSC) entitled "National Conflict Mapping and Analysis: Peace and Conflict Trends in Kenya", three possible scenarios are laid out. These are i) the status quo ii) worst-case scenario and iii) best-case scenario. These scenarios outline the possible trends in peace and conflict in the run up to elections and provide an analytical basis to develop humanitarian scenarios. For the purposes of planning within the humanitarian sector this plan focuses on most-likely and worst-case scenario. The scenarios below also reflect the outcome of consultations in Nakuru, Eldoret, Nairobi, Mombasa, Isiolo and Garissa.

#### *Most-likely scenario*

Based on the current peace and conflict trends in the country the most likely scenario envisages localized episodes of inter-communal conflict, displacement and disruption of basic services will continue as a result of multiple factors. These include pre-existing tensions including over resources, disagreements of the implementation of IEBC boundary decision, devolution and competition for representation at county level, election campaigning, and ICC processes. Tensions could be exacerbated by the increased use of small arms and light weapons and the increase in militia activity. A build-up of tension could be seen during the election campaigning period and manifest itself in the North and in South Rift, parts of western, informal settlements in Mombasa, Nairobi and Kisumu as well as in parts of upper eastern and north eastern provinces. Areas likely at high risk of being affected include upper Eastern, Northeastern, parts of Coast and Rift Valley Provinces, and major urban centres.

Closer to elections and registration process themselves, episodes of conflict surrounding elections are highly likely. It is envisaged that a build-up of tension during the campaigning and election periods could be experienced in the North and in South Rift, parts of Western, informal settlements in Mombasa, Nairobi and Kisumu as well as in parts of upper eastern and north eastern provinces. In this phase there is a significant possibility of a run-off which would further escalate risk of tensions. In this event, the run-off election phase would be in early April. However this element of the scenario also foresees that the considerable investment in peace

building and conflict mitigation, particularly in those areas affected 07/08 PEV will have a positive impact.

Overall, when compared to the PEV in 07/08, it is anticipated that there will be less displacement in traditional PEV hot spots (such as the Rift Valley and major urban centres) but there is likely to be an increased risk in non-traditional hotspot in the Arid and semi arid areas and in the pre-election period. This increased risk could see the exacerbation of pre-existing inter-communal tensions as a result of political competition including in relation to county level representation.

The humanitarian impact of these dynamics include

- Loss of life and injury
- Localized displacements and disruption of livelihoods and basic services
- Destruction of crops, granaries, livestock, land and property and disruption of agriculture and other livelihoods activities.
- Increase in protection related risks such as gender based and sexual violence, the most vulnerable will be women, children and youths. Separation of children highly likely.
- Civic education on the devolution process and nationwide peace building campaigns will have contributed to peace and reconciliation efforts.
- Displaced population and other vulnerable groups will be supported by the local district administration and agencies such as Kenya Red Cross though with some additional support from the international community.
- Schools and other public facilities are likely to be used to house displaced disrupting basic services such as education
- High probability of sporadic clashes or disturbances in urban centres including Nairobi and Mombasa.

*Preliminary planning estimates*

Using a scaled scenario from the previous elections, the most likely envisages that up to 350,000 - 400,000 people could be displaced between September 2012 and April 2013. However, it is anticipated that this will include temporary displacements and that not all of those displaced will require humanitarian assistance. Affected populations would include major urban centres as well as more remote areas.

<b>HUB</b>	<b>Districts</b>	<b>Population (2009 census)</b>	<b>Estimated no. of people displaced</b>	<b>Remarks</b>
Isiolo	Moyale, Marsabit, Isiolo	434460	50,000-60,000	Based on Isiolo hub workshop Nov 2012
Nakuru	Nakuru, Naivasha, Kipkelion, Molo, Njoro, Narok, Subukia		185,000	According to the protection workshops

Eldoret	Kitale, Nandi, Uasin Gishu, Burnt Forest		25,000	According to the protection workshops
Mombasa	Mombasa, Lamu, Tana River, Kwale, Malindi, ...	3,325,307	50,000-70,000	Based on Mombasa hub workshop Oct 2012
Garissa	Garissa, wajir, Manerda, Ijara, Fafi, Hagadera	2,310,757	18,000	Based on CP consultations
Kisumu	Nyanza, Western	9,776,993	10,000	Percentage estimation
Turkana		855,399	3,000	Percentage estimation
Nairobi Urban area	Kibera, Makandara, Kasarani, ....	1,099,453	30,000	Based on hub consultation
Other areas	...		20,000	Percentage estimation
<b>Total</b>			<b>350,000-400,000</b>	

*Worst-case scenario*

The worst case scenario would envisage unsuccessful implementation of electoral reforms opening up the 2013 elections process to abuse and triggering the type of widespread violence seen in the last elections. An increasing number of people will be affected during the conflict with injuries and possibly deaths. There will be displacement and other vulnerabilities which may go beyond the local capacity and require support from Nairobi.

Security response from the Government will be overstretched due to the multiplication of localized conflicts and increased demand for security response.

Other assumptions are as follows:

- In addition to episodes of repeated localized conflict, there will be one or more incidences of mass violence in the run up to, or in the immediate period surrounding the elections.
- Violence leads to death and injury to a similar scale seen in 2007/08. In a worst case scenario up to 500,000 people could be displaced in the Rift Valley alone.
- Displaced populations will flee to places they perceive as being secure including public buildings such as local administration offices, chief offices, churches, schools, and police posts. This will lead to a disruption of the ongoing operation of these basic services.
- Protection impacts include large scale gender based violence, and separation of children.
- Particular vulnerability or targeting of existing or resettled IDPs.

- Initial access could be hampered by road blockades and insecurity.
- Disruption of basic services provision such as health and education.

### **Specific description of hotspots**

Detailed descriptions of some areas assumed to be most affected within districts with high and medium level of risk for conflict are as follows:

#### **A. South Rift**

1. **Nakuru district**—hotspot areas—Baruti, Municipality, Pipeline, Section 58, Lanet, Githima, Rhonda, Ponda Mali (Kikuyu, Kalenjin and Kisii communities living together), in Kaptembwa (mixed communities of Luo, Kalenjin, Luhya, Kisii and few Kikuyu). IDP self -help group sites (Kikuyu communities) in Pipeline and Ngata and two other groups from the Kisii and Luo communities also living in Ngata.
2. **Nakuru North**— hotspot areas— Dondori centre in Lanet division, the highway towards Subukia, Solai with Kalenjin, Majani Mingi where both the Kalenjin and Kikuyu live.
3. **Molo** – Mauche bordering Ndeffo, PEV hot spot area with current incidents of cattle rustling and inter-communal tension. In Kuresoi, Muchorwe, a Mungiki stronghold with long standing history of conflict. Keringet division in Kamaura area at the boundary of Kalenjin and Kikuyu communities. This is the epicentre of political conflicts in the South Rift. The Mau forest border areas of Mauche and Marioshoni where the majorities are Kalenjins. Important to note is that Molo town will likely house displaced people who may seek refuge in various local administrations offices and churches.
4. **Naivasha**— This is a Mungiki stronghold. During the PEV this group took over control of the roads and highways. There might be a likelihood of conflict between the Mungiki and the Maasai in Maela. Flower farm workers from different ethnic groups may also be targeted. The Kalenjin groups living in the Kiambogo areas will flee either towards Narok district or towards Nakuru as they are fewer in number in this district.

#### **B. North Rift**

1. **Eldoret West, East and Wareng**— are places where ethnic conflicts could easily erupt. These districts are host to the PEV IDPs from the Kikuyu ethnic group who returned to their farms and some are in transit sites. This is mainly Kalenjin ethnic group stronghold. However, there are also other tribes such as the Luhya and Luo who live in the area. Any small incident could spark off conflict. It is important to note that during emergencies, the districts will be a host to a bulk of the displaced people fleeing from rural areas to Eldoret town.
2. **Baringo/Marigat**— A former president Moi stronghold with potential for politically related violence. Whilst this area may see some disruption in the pre-election period, it is expected that it may host displaced from other areas.
3. **Trans Nzoia East and West:** Potential tensions between the more numerous Kalenjin communities and Kikuyu. The Pokot living in this region feel that they are the rightful and historical owners of land in the Greater Trans Nzoia since colonial period.
4. **Nandi North and Central:** The area is also cosmopolitan and any sparks of intolerant actions will most likely be met with violence.

5. **Nandi East, Tinderet:** The land issue is highly sensitive in these districts and the ICC issue is being followed keenly by the residents. There are Mau evictees and this may spur inter-ethnic conflicts. KASS radio, a local vernacular broadcasting in Kalenjin, has the largest listeners in the area.
6. **Koibatek and Mogotio:** The political class of these districts may incite communities against each other.
7. **Turkana:** Traditional inter-communal rivalries could be further exacerbated by the process of devolution and competition in both local and national elections.

#### **C. Upper Eastern**

1. **Moyale, Marsabit and Isiolo:** Traditional inter-communal rivalries could be further exacerbated by the process of devolution and competition in both local and national elections. Cross border dynamics could lead to further displacements to and from Ethiopia.

#### **D. North Eastern**

2. **Mandera, Wajir, Garissa:** Traditional inter-communal rivalries could be further exacerbated by the process of devolution and competition in both local and national elections. Structural causes of conflict include clanism, boarder conflicts and marginalization. These factors are further exacerbated by a proliferation of small arms and light weapons and diminishing roles of traditional authority structures. The influx of refugees into and through this region places additional strain on inter-communal relations.

#### **E. Coast Province:**

3. **Tana River:** Pre-existing inter-ethnic animosity, Land ownership and access – Multi-national companies land alienation, Resource – based conflict between farmers and pastoralists, political competition – mainly affecting Pokomo and Orma communities
4. **Kilifi:** MRC activism, exclusion issues and underlying tensions between indigenous population in land, Al Shabaab infiltration and terrorist threats.
5. **Mombasa:** MRC activism, exclusion issues and underlying tensions between indigenous population up country, Al Shabaab infiltration and terrorist threats.
6. **Kwale:** MRC secessionist campaigns and tensions between indigenous locals and perceived upcountry foreigners. Land ownership issues, exclusion issues
7. **Lamu:** Proposed Lamu Port project land alienation, spill over from Tana Delta
8. **Taita Taveta:** Land issues - squatter pressure – Between locals and perceived foreigners

#### **F. Informal settlements in urban areas**

The informal settlements in Nairobi and Mombasa will be a target in the violence. The unemployed youth may take the opportunity to engage the security forces and in the process there will be injuries and possible deaths. The areas within the urban settlements will be affected. In the advance of the 2010 referendum, the urban vulnerability brainstorming group identified the following potential scenarios in Nairobi and Mombasa urban areas. These remain a potential focus of concern in the pre and post-election period.

1. **Nyanza Province:** Movements of population returning or moving out (non-residents) for fear of a repeat of violence as in 2008 may be experienced. There was an increased influx of people to Kisumu fleeing violence from urban and peri-urban areas around the country. Naivasha had a high exodus of people to Nyanza as flower farm workers flee the violence. The areas affected are assumed to be Kisumu Town West and Kisumu East (the Municipality District) receiving these groups. There is also foreseeable movement of Luo communities living in the border areas of Rift Valley and Nyanza.
2. **Coast:** The areas to watch include Changamwe, Likoni and Kisauni mostly in the urban and informal settlements areas. These areas experienced skirmishes during the PEV manifested by violence, looting and destroying properties such the Central Business District areas in Mombasa City.
3. **Nairobi:** Hot spot areas include the many informal settlements in Kibera, Mukuru, Kiambio, Mathare Valley, Majengo, Kawanware, Kangemi. These areas were affected during the PEV and remain at risk from violence and looting. These areas may also experience frequent population movements including in anticipation or fear of violence.

## 5. Timeframe

The contingency plan covers the pre-election period from September 2012 until April 2013, assuming that elections take place as scheduled on 4 March 2013. The period also covers potential for a run off in April in the event the election is not decided in a first round of voting. This period will be monitored closely by partners involved in early warning and the humanitarian community in case the situation deteriorates.

In a worst case scenario the implementation period may last up to six months after elections.

## 6. Strategies and Objectives

As in most violence-related emergencies, the following life-saving activities are prioritized in this contingency plan: health response activities—first aid, medical treatment and psychosocial counseling, emergency food/nutrition, water and sanitation and protection activities (education serving a critical protection function for children). When displacement occurs, non-food items (NFIs), temporary shelter distributions and camp management needs to be accelerated. In addition crosscutting concerns have also been integrated into the emergency response package including gender, HIV/AIDS, GBV, age, disability and PSEA.

Within the most likely scenario, it is expected that a large part of the needs will be covered by national capacity (Kenya Red Cross and GoK). The other humanitarian organizations and the UN agencies will provide support to the first line response and additional response capacity in the event that the situation exceeds available first line resources.

## 7. Management and Coordination

### Coordination

The Government of Kenya will take the lead in respective sectors supported by UN agencies and non-governmental organizations. But this will mainly be coordination and information sharing in

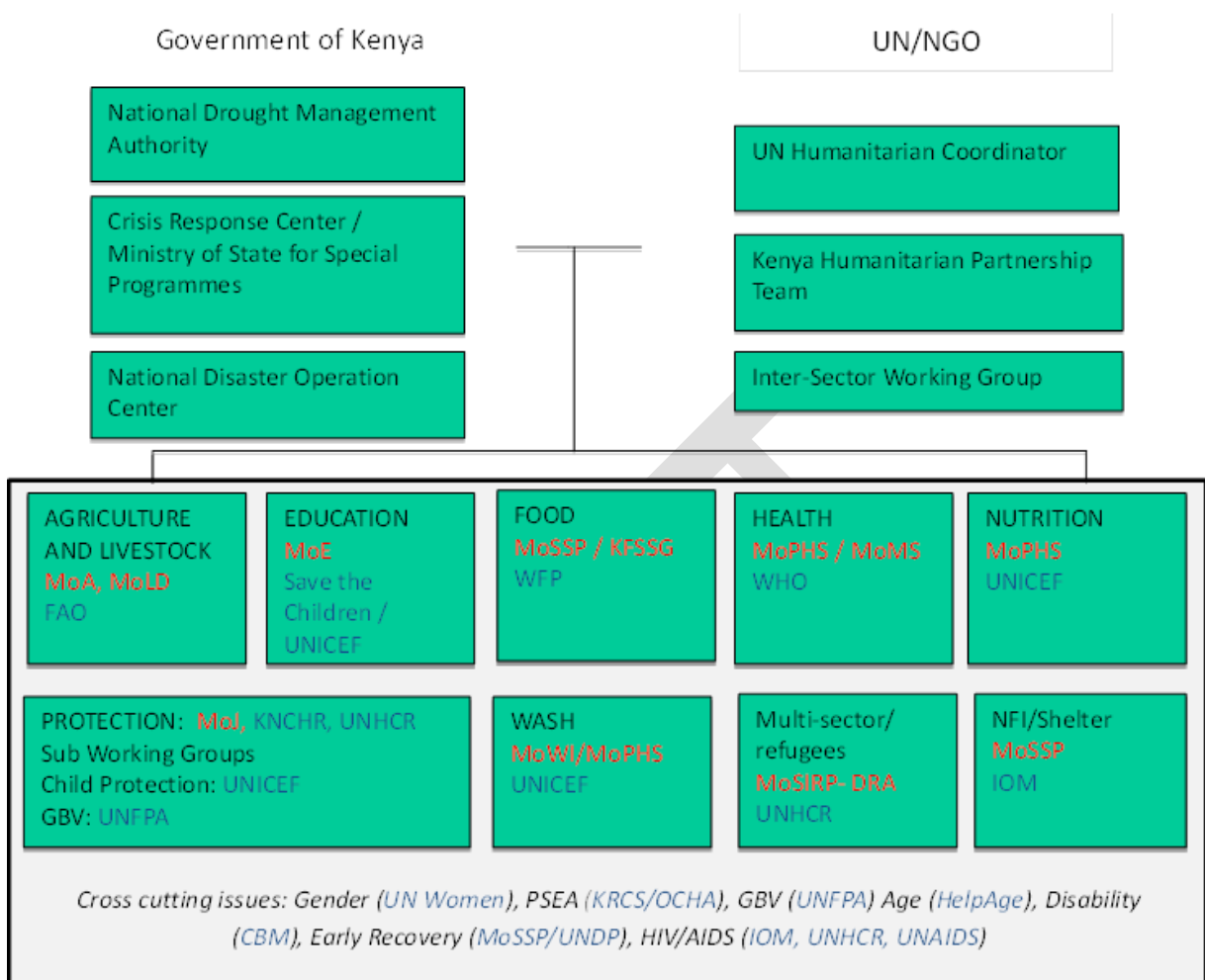
the most likely scenario. The Kenya Red Cross is expected to be the main actor in the first line response, with other field based NGOs and faith based organisations also providing response interventions.

It is anticipated that the current coordination system involving technical sectors led by line ministries with support from the UN/NGOs and with participation from NGOs (both international and national), UN Agencies and Government will be utilized for response activities. This arrangement is currently operational at national level and has linkages with the sub-national hubs and with county level coordination through the District Steering Groups and / or Disaster Management Committees as well as specific technical groups such as the district level protection working groups (with Child Protection sub-groups), district wescoords, and district nutrition fora. For the purposes of preparedness, the Shelter and NFI sector has been reactivated with leadership from MoSSP and co-leadership from IOM. However it should be noted that depending on the situation additional sectors may need to be activated including in logistics and camp coordination and camp management coordination.

Sector lead Ministries and UN/NGO support (see annex for a full list of contacts)

Sector	Lead Ministry	Support organisation
Education	MoE	UNICEF / Save the Children
Food	MoSSP / KFSSG	WFP
Health	MoPHS / MoMMS	WHO
Nutrition	MoPHS	UNICEF
Protection	MoJ	KNCHR / UNHCR
WASH	MoWI / MoPHS	UNICEF
Agriculture and livestock	MoLD / MoA	FAO
Logistics	MoSSP / NDOC	WFP
Shelter and NFI	MoSSP	IOM
Camp Coordination and Camp Management	MoSSP	UNHCR

The current national level coordination structures are shown below.



### Coordination in the field

In order to support preparedness and coordination at a sub-national level, eight coordination hubs have been identified which aim to capitalise on existing presence and capacity in the field. The purpose of the hubs is to provide additional support to humanitarian operations where organisations can supply surge capacity, preposition relief items and harmonise response activities. Hubs would also serve as centres for information management and reporting.

In the event of a humanitarian crisis, hubs will be requested to play a key role in the preparation and information sharing with humanitarian organizations. If the situation deteriorates into the worst case scenario, hubs coordination mechanisms will be enhanced and national support through the national coordination forums such as the sector working groups, the Inter-Sector Working Group, the CRC, NDOC, KHPT and the KHF will be required.

The Provincial Disaster Management and the government departmental meetings which were active during the PEV could be reactivated to coordinate the humanitarian operation if the situation worsens. At the district / county level, the District Disaster Management Committees (DDMC) chaired by the District Commissioners (DCs) would be activated in non-ASAL areas and the existing District Steering Groups would be used for coordination of response in ASAL areas.

These meetings would be held regularly and attended by stakeholders from government departments and the humanitarian community.

The capacity of Kenya Red Cross (KRC) as a first responder has been proven. It is assumed that the KRC would be playing a lead role in responding to emerging humanitarian needs. It is important to have an understanding of KRC's available resources and their capacity to respond in case of a large scale pre or post-election emergency. The preparedness process will endeavor to take into consideration KRC capacity and support required from the international community to complement KRC and the Government of Kenya to respond should widespread violence and displacement occur.

Sub-national hubs will provide support in coordination of additional response capacity in the area of coverage in order to support Government, KRC and other first line responses. Hubs will provide support to existing coordination mechanism at district, county or provincial level (this could be generalized support or establishment of sub national sectors depending on scale). The Hubs will act as points of information collection, analysis and dissemination and reporting including support to rapid assessments.

The following hubs have been identified:

Location	Coverage	Priority	Focal point organisation
Nairobi (for urban informal settlements)	Kasarani, Westlands, Langata and Makadrasitrcits, Embakasi, (covering, Kibera, Mathare, Kariabangi, Kariakor, Korogocho, Kangemi) , Mombassa, Kisumu, ...	High	Concern Worldwide / UVF
Eldoret	Eldoret: Eldoret East, Eldoret West, Wareng, Trans Nzoia East, Trans Nzoia West, Kwana, Nandi North, Nandi Central, Nandi East, Tinderet, Keiyo South and Keiyo North.	High	IOM / OCHA
Nakuru	Nakuru: Nakuru Central, Nakuru North, Rongai, Subukia, Naivasha, Gilgil, Molo, Njoro, Kuresoi, Trans Mara East, Trans Mara West, Baringo, Marigat North, Kericho and Kipkelion	High	NRC, Protection Working Group
Garissa	Mandera, Wajir, Garissa, Ijara	High	UNICEF / Islamic Relief, Save the Children

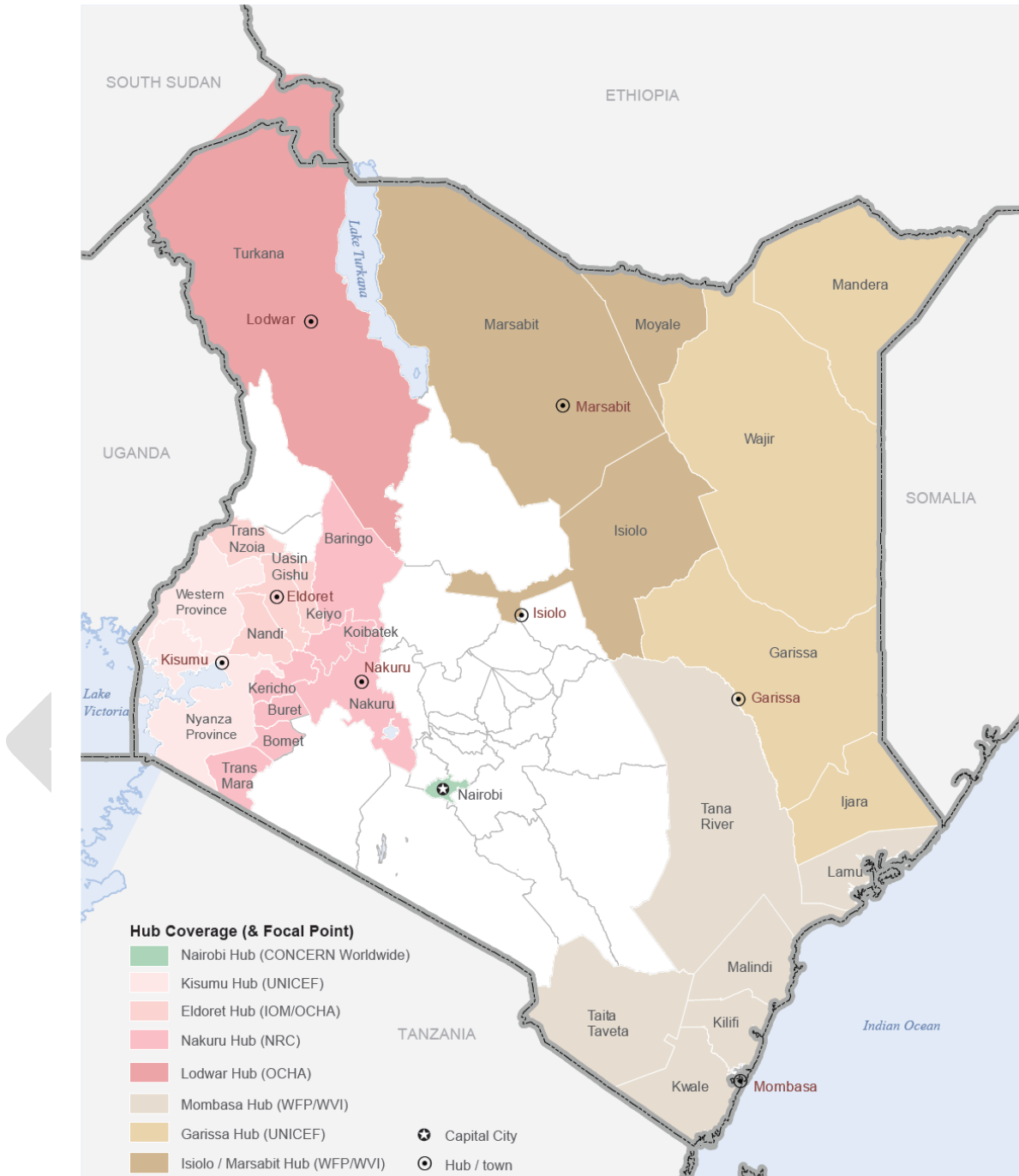
Mombasa	Mombasa informal settlements / Kilifi, Kwale, Lamu, Taita Taveta	High	WFP / WVI
Isiolo / Marsabit	Isiolo, Marsabit, Moyale, Samburu	High	WFP / WVI
Lodwar	All districts in Turkana county	High	OCHA
Kisumu	Western Kenya, Nyanza	High	UNICEF

DRAFT



Contingency planning hubs have been put in place to support preparedness and district/county coordination mechanisms led by the Government of Kenya.

DRAFT



The boundaries and names shown and the designations used on this map do not imply official endorsement or acceptance by the United Nations.  
 Creation date: 12 October 2012 Sources: Contingency Plan Feedback: ochakenya@un.org www.unocha.org www.reliefweb.int

**a. North Rift –Eldoret Hub**

The Eldoret hub covers Eldoret East, Eldoret West, Wareng, Trans Nzoia East, Trans Nzoia West, Kwana, Nandi North, Nandi Central, Nandi East, Tinderet, Keiyo South and Keiyo North, In the run up to the 2010 referendum, IOM agreed to help in preparation at the field level with OCHA support. It is suggested that a similar arrangement is put in place given that OCHA has minimal capacity in Eldoret. There are four UN agencies working in this region. They include WFP, UNOCHA, UNDP and IOM. UNICEF is undertaking operations in North Rift with oversight from Kisumu. Agencies such as WHO, UNICEF, UNHCR, IRC, CRS, UNFPA, ICRC and MSF-Spain which worked in Eldoret during the PEV response could be requested to support since they are based in Nairobi.

**b. South Rift –Nakuru Hub**

The Nakuru operational hub covers 19 districts, which include Nakuru Central, Nakuru North, Rongai, Subukia, Naivasha, Gilgil, Molo, Njoro, Kuresoi, Trans Mara East, Trans Mara West, Baringo, Marigat North, Kericho and Kipkelion. UNDP/UNV is the only UN agency on the ground carrying out peace and reconciliation activities. Other agencies present include NRC, GOAL Ireland, Refugee Consortium of Kenya (RCK), Catholic Diocese of Nakuru (CDN), NCK, IDP Network and St Mary's Mission Hospital. International emergency partners, including Merlin, Save the Children-UK, ACF-France, MSF-Spain, ICRC, IOM, WFP, UNHCR, UNICEF and DRC phased down their programmes in 2009 following the IDP *Operation Rudi Nyumbani*, operation return home, conducted by the government. Coordination continues to place through the Protection Working Group (PWF). NRC has agreed to act as hub focal point in conjunction with the co-charis of the Protection Working Group.

**c. Nairobi informal settlements – Nairobi Hub**

The Nairobi hub will cover informal settlements including in Kasarani, Makadara and Langata Districts. Some UN and NGO organizations are already undertaking urban programmes in Nairobi. There will be a need to designate technical staff to work in the affected county in collaboration with the District Disaster Management Teams and NGOs in emergency assistance. In order to support coordination at a county level, the Nairobi hub has appointed sub-focal points in each county. Other UN and NGOs will support district departments in sector/cluster coordination should the need arise.

**d. Mombasa informal settlements / coast hostspots – Mombasa Hubs**

The Mombasa operational hub covers all the counties of Coast district as well as informal settlements in Mvita, Likoni and Changamwe. WFP and Kenya Red Cross are based in Mombasa. There are other organizations such as World Vision, German Agro Action, Outreach centre, Actionaid and Kenya Sustainable Aid. The hotspots in this area are the informal settlements in Likoni, Mvita and Changamwe amongst other areas. Some districts like Likoni are new with limited infrastructure and inadequate coordination structures. Likoni is also a hotbed of violence occurring after every election. In the wider province the hub will provide support to county level coordination structures as needed in Tana River, Kilifi, Kwale, Malindi and Lamu (through the District Steering Groups).

**e. Upper eastern – Isiolo Hub**

The hub in Isiolo is intended to provide support to preparedness activities in the three counties of upper Eastern Province (Moyale, Marsabit and Isiolo). Here the Kenya Red Cross is present, as is WFP, Action Aid, World Vision and a number of faith based organisations including the Catholic diocese and Islamic groups. Others operating in the geographic area include CRS, concern, SOS, PISP, GOAL, GAA, VSF, JAICA, FH, FAO, caritas, Community Initiative for Assistance

**f. North Eastern – Garissa Hub**

In order to capitalize on the presence of a large number of actors, a hub is being established in Garissa to support response in North Eastern province including in Mandera, Wajir, Garissa and Ijara. Organisations present in Garissa include KRCS, Islamic Relief, JAICA, Save the Children, Mercy Corps, WFP, UNICEF, FAO and WHO. Other organisations operating in the area include World Concern, CESVI, WASDA, WARDA, Merlin, Care, Oxfam, COCOP and Northern Aid. Focal point organisations for the hub are UNICEF, Islamic Relief and Save the Children.

**g. Kisumu Hub**

The Kisumu Hub coverage area includes Nyanza and Western. UNICEF, as the hub lead is providing support to review county level coordination and contingency planning.

**h. Lodwar Hub**

It is proposed that Lodwar would act as the hub for support to preparedness and coordination in Turkana. A number of partners present in Turkana and coordination through the DSGs is ongoing.

**Information management and communication**

In communication, the Humanitarian Coordinator is responsible for providing official communication about the emergency on behalf of the United Nations. UNOCHA will provide support to the Humanitarian Coordinator in undertaking these responsibilities. This will include developing press releases, key messages, donor information materials, press interviews, high level missions to emergency areas and other information. At some instances, the HC can appoint a KHPT representative as an alternate to communicate key messages on the emergency. Other UN agencies will also have their own spokespersons speaking on various humanitarian issues — the HC can delegate them to speak on his behalf.

At the field level, the following tools will be in place to ensure appropriate information and communication system during preparedness and response period:

- SMS platform exists for sector leads from the GoK, UN co-lead, CRC members and NDOC. This platform uses the number 07106202741 and each SMS need to start with the word Sector and a message sent to all the members.
- Humanitarian mailing list and UNOCHA website will be used to disseminate regular sitreps from OCHA and partners.

**Security and access**

In the most likely scenario, it is not expected that access will be significantly hampered in most incidences. However, in case of a large scale outbreak of violence, for example, difficulty to access the affected populations, limited assessments and response activities will be possible.

Information related to hubs and scenarios will be shared with UNDSS and with the national authorities to discuss potential security arrangements for humanitarian operations.

The new NGO security platform , INSO, will be engaged in monitoring of security issues and potential access issues.

#### Transport / logistics considerations Rift Valley

There is a route from Nairobi which passes through Naivasha-Nakuru-Eldoret-Kisumu. At the outskirts of Nakuru, there is the turning towards Molo. In the town, there is the turning to Bahati, headquarter of Nakuru North District. During heightened insecurity situation, there will be need to closely assess the passage while humanitarian logistics activities are undertaken. In case there is barricade of passage on the highway between Nakuru and Nairobi, an alternative route, Nakuru-Bahati (Nakuru North)-Subukia-Nyeri-Nairobi (tarmac road) will be used. The roads are in good conditions. But security escort services and costs in the transport logistics and staff movement plans need to be factored. In the event of heightened insecurity, the movement of UN staff supervising and monitoring humanitarian activities may be affected in certain areas when security phases change.

In the South Rift—Nakuru hub, there are three airstrips in Lanet Military base and Kabarak (privately-owned) and a Kenya Wildlife Service Airstrip located at the Lake Nakuru National Park. These airstrips could be useful for medical, security evacuations and airlifting critical humanitarian supplies. While in the North Rift—Eldoret hub, there is an international airport in Eldoret town. The other key routes remain Nairobi-Naivasha-Nakuru-Eldoret. Where there are blockages, an alternative route can be used: Nairobi-Nanyuki-Samburu-Marigat-Karbanet-Eldoret. Finally, in Mombasa, Nairobi-Mombasa highway is the main route. In the event there is blockage, supply trucks can use an alternative road, Nairobi-Thika-Mwingi-Garissa-Hola-Garsen-Malindi-Mombasa. The third option is by air through Mombasa International Airport.

#### Transport / logistics considerations for other hot spot areas

It is suggested that WFP and other logistics partners are consulted on transport and logistics considerations for other hot spots and proposed hubs.

#### **Needs assessment**

Needs assessments and response may be hampered due to security constraints at the onset of the emergency. In this case, it may be necessary to rely on secondary data generated by local authorities and other non-governmental partners operating on the ground. However, when security conditions allow, humanitarian partners will carry out multi-sector needs assessments.

In 2012, the Kenya Humanitarian Partnership Team agreed to support a process to strengthen multi-sector assessments in sudden onset emergencies to ensure that common methodology and tools is used by the humanitarian actors in Kenya to ensure quality and comparativeness. The agreed mechanism is known as the Kenya Initial Rapid Assessment (KIRA) and began rolling out in October. To date more than 120 people have been trained including in four hub locations. In December a simulation exercise provided an opportunity for national level actors involved in coordination and hub focal points to test some of the assumptions around coordination and around the KIRA process. The key findings and recommendations are available on the humanitarian response website at: <http://kenya.humanitarianresponse.info/>. As of December the KIRA has been used as the agreed tool for multi-agency rapid assessments. More

information and access to guidance and tools can be found on the humanitarian response web site at the URL provided above.

### **Information management**

In order to facilitate information flow, the Humanitarian Response web platform has been introduced as a replacement for OCHA online. The new platform includes sector and hub specific pages and includes reports, assessment information, meetings and events calendars, contact lists, maps and other key information. <http://kenya.humanitarianresponse.info/>. The website will be maintained by sector coordinators and hub focal points with sufficient Information Management capacity and by OCHA where such capacity does not exist and in the overall maintenance of the site.

### **Next steps**

- Further hub level discussions
- KIRA trainings for hub in Nairobi, Kisumu/Nakuru, Garissa hubs
- Potential simulation exercises for hubs (Nairobi, Rift Valley / Kisumu hubs, Mombasa)
- Further national contingency planning consultations in immediate run up to elections to elaborate further operational plans
- Continued review of sector and hub plans.

### **List of Annexes:**

- I. Contact lists
- II. Whose doing what where

### **Other references:**

- For hub-specific plans and analysis, consult the specific hub pages on the humanitarian response website or hub focal points (see list below).  
<http://kenya.humanitarianresponse.info/>.
- The report and recommendations from the National level simulation exercise can be found at the following link: <http://kenya.humanitarianresponse.info/resources/key>
- For information about KIRA, and to download tools and guidance click following link: <http://kenya.humanitarianresponse.info/resources/assessment-registry>
- Reports from the NSC can be found at the following site:  
<http://www.nscpeace.go.ke/nsc/index.php/resource-library/downloads>
- The latest Who does What, Where (3W) maps can be found at:  
<http://kenya.humanitarianresponse.info/aggregator/sources/3>

## Annex I: Contact lists

Please note that a list of humanitarian partners in Kenya is available on the Humanitarian Response website at <http://kenya.humanitarianresponse.info>

### A. National level sector coordination

<b>Government coordinators</b>				
Agriculture and livestock	Tom Dienya (agriculture) / Didactus Ityeng (livestock)	Ministry of Livestock / Ministry of Agriculture	<a href="mailto:didactus.ityeng@kenya.go.ke">didactus.ityeng@kenya.go.ke</a>	
Early recovery	Vincent Matioli	Ministry of State for Special Programmes	<a href="mailto:vincent.matioli@kenya.go.ke">vincent.matioli@kenya.go.ke</a>	
Education	1. Robert Olodo 2. Mutui Zachary	Ministry of Education	<a href="mailto:robert_olodo@yahoo.com">robert_olodo@yahoo.com</a> , <a href="mailto:mtuirizack@yahoo.com">mtuirizack@yahoo.com</a>	Olodo 0721445619 Mutui 0728535268
Food	James Odour	National Disaster Management Authority / Kenya Food Security Steering Group	<a href="mailto:j.oduor@aridland.go.ke">j.oduor@aridland.go.ke</a>	
Health	Dr. Mutunga / Dr. Shikanga	Ministry of Public Health and Sanitation	<a href="mailto:shikangadoc@dds.or.ke">shikangadoc@dds.or.ke</a>	
Nutrition	Valerie Wambani	Ministry of Public Health and Sanitation, (Division of Nutrition)	<a href="mailto:vwambani@gmail.com">vwambani@gmail.com</a>	
Protection	Collins Omondi	Kenya National Commission for Human Rights	<a href="mailto:collins@knchr.org">collins@knchr.org</a>	
WASH/WESCOORD	1. Fred Mwango (MoWI) 2. Eliud Wamwangi (MoWI) 3. Doyle Brika (MoPHS)	Ministry of Water and Irrigation / Ministry of Public Health and Sanitation	<a href="mailto:fredmwango@yahoo.com">fredmwango@yahoo.com</a> / <a href="mailto:ekagama@yahoo.com">ekagama@yahoo.com</a> / <a href="mailto:doylebrika@ymail.com">doylebrika@ymail.com</a>	Eliud - 0734147706 Doyle - 0720861041

Shelter / NFI		Ministry of State for Special Programmes		
<b>UN / NGO co-coordinators</b>				
Agriculture and livestock	Robert Allport / Paul Omanga / Jordan Ramacciato	FAO	<a href="mailto:Robert.Allport@fao.org">Robert.Allport@fao.org</a> / <a href="mailto:paul.omanga@fao.org">paul.omanga@fao.org</a> / <a href="mailto:Jordan.Ramacciato@fao.org">Jordan.Ramacciato@fao.org</a>	0737701441 / 0735800383 / 0732759059
Early recovery	Myeon Joa Kim	UNDP	<a href="mailto:myeonjoa.kim@undp.org">myeonjoa.kim@undp.org</a>	0710 295129
Education	Sajjad Ismail	UNICEF	<a href="mailto:sismail@unicef.org">sismail@unicef.org</a>	0710820828
Food	Matthew Mcilvenna	WFP	<a href="mailto:matthew.mcilvenna@wfp.org">matthew.mcilvenna@wfp.org</a>	707722347
Health	James Teprey	WHO	<a href="mailto:Tepreyj@KE.AFRO.WHO.INT">Tepreyj@KE.AFRO.WHO.INT</a>	733330100
Nutrition	Brendah Akwanyi	UNICEF	<a href="mailto:bakwanyi@unicef.org">bakwanyi@unicef.org</a>	725893319
Protection	Salaton Leteipan	UNHCR	<a href="mailto:LETEIPAN@unhcr.org">LETEIPAN@unhcr.org</a>	721728007
Child Protection (sub sector)	Margaret Basigwa	UNICEF	<a href="mailto:mbasigwa@unicef.org">mbasigwa@unicef.org</a>	
Gender Based Violence (sub sector)	Matildah Masumba	UNFPA	<a href="mailto:mmusumba@unfpa.org">mmusumba@unfpa.org</a>	0728 600 509
Shelter / NFI	Sharif Ahmed / Fatma Said	IOM	<a href="mailto:sahmed1@iom.int">sahmed1@iom.int</a> / <a href="mailto:fsaid@iom.int">fsaid@iom.int</a>	0725 850597 / 0728600507
WASH/WESCOORD	Jane Maonga	UNICEF	<a href="mailto:jmaonga@unicef.org">jmaonga@unicef.org</a>	0705120189

Inter-sector	Lucy Dickinson	OCHA	<a href="mailto:dickinsonl@un.org">dickinsonl@un.org</a>	0722521031
<b><u>Cross cutting issues focal points</u></b>				
Gender	Njoki Kinyanjui / Susan Nganga	UN WOMEN	<a href="mailto:njoki.kinyanjui@unwomen.org">njoki.kinyanjui@unwomen.org</a> / <a href="mailto:Susan.n">Susan.n</a>	0721382541 / 0207624385
HIV/AIDS	Jacqueline Dache	UNHCR	<a href="mailto:Dache@unhcr.org">Dache@unhcr.org</a>	0725 652 240
HIV/ADS	Angeline Wambanda	IOM	<a href="mailto:awambanda@iom.int">awambanda@iom.int</a>	0716 73 41 29
HIV/AIDS	Gary Jones	UNAIDS	<a href="mailto:jonesg@unaids.org">jonesg@unaids.org</a>	0705 658499
PSEA	Christine Uyoga	PSEA Network	<a href="mailto:uyoga@un.org">uyoga@un.org</a>	0734 733 489
Age	Ibrahim Njuguna	Help Age International	<a href="mailto:Injuguna@helpage.co.ke">Injuguna@helpage.co.ke</a>	0722369366
Disability	David Munyendo / Nerea Thigo	CBM	<a href="mailto:dmunyendo@cbmi-nbo.org">dmunyendo@cbmi-nbo.org</a> / <a href="mailto:nthigo@cbmi-nbo.org">nthigo@cbmi-nbo.org</a>	0731 090 014
Early Recovery	Myeon Joa Kim	UNDP	<a href="mailto:myeonjoa.kim@undp.org">myeonjoa.kim@undp.org</a>	0710 295129
Cash Transfer Programming	Glenn Hughson	CaLP	<a href="mailto:eastafrika@cashlearning.org">eastafrika@cashlearning.org</a>	0731777421
Urban vulnerability Forum	Buck Child	GOAL	<a href="mailto:bchild@ke.goal.ie">bchild@ke.goal.ie</a>	0738908722

### Hub Focal points

Hub	Organisation	Contact person	Email	Telephone number
Mombasa	World Food Programme	David Kamau / Matthew Mcilvenna	<a href="mailto:david.kamau@wfp.org">david.kamau@wfp.org</a> / <a href="mailto:matthew.mcilvenna@wfp.org">matthew.mcilvenna@wfp.org</a>	0707724240 / 0707722347
Mombasa	World Vision International	James Maringa	<a href="mailto:james_maringa@wvi.org">james_maringa@wvi.org</a>	0722480209
Mombasa	<i>OCHA (support provided from Nairobi)</i>	John Ndiku	<a href="mailto:ndiku@un.org">ndiku@un.org</a>	0737600700
Isiolo	World Food Programme	Josephine Muli / Timothy Koskei	<a href="mailto:josephine.muli@wfp.org">josephine.muli@wfp.org</a> / <a href="mailto:timothy.koskei@wfp.org">timothy.koskei@wfp.org</a>	0707724610 / 0707724641
Isiolo	World Vision International	Ang'awa Anditi	<a href="mailto:Angawa_Anditi@wvi.org">Angawa Anditi@wvi.org</a>	0724 126 844
Isiolo	<i>OCHA (support provided from Nairobi)</i>	John Ndiku	<a href="mailto:ndiku@un.org">ndiku@un.org</a>	0737600700
Nairobi	Concern Worldwide	Camilla Herd	<a href="mailto:hubnairobi@hotmail.com">hubnairobi@hotmail.com</a>	0722452133
Nakuru	Norwegian Refugee Council	Soida Barasa	<a href="mailto:soida.barasa@nrc.no">soida.barasa@nrc.no</a>	0722 780 914
Nakuru	MoJNCCA-NALEAP	Flora Bedali	<a href="mailto:fbidali@yahoo.com">fbidali@yahoo.com</a>	
Nakuru	Provincial Peace Forum	Samwel Masumba	<a href="mailto:samwelmusumba@yahoo.com">samwelmusumba@yahoo.com</a>	
Nakuru	<i>OCHA (support provided from Eldoret)</i>	Annastacia Some	<a href="mailto:some3@un.org">some3@un.org</a>	0710602739
Eldoret	International Organisation for Migration	Laura Jones	<a href="mailto:ljones@iom.int">ljones@iom.int</a>	0722 209 445
Eldoret	<i>OCHA</i>	Annastacia Some	<a href="mailto:some3@un.org">some3@un.org</a>	0710602739
Kisumu	UNICEF	Margaret Gwada	<a href="mailto:mgwada@unicef.org">mgwada@unicef.org</a>	0708989214
Kisumu	<i>OCHA (support provided from Eldoret)</i>	Annastacia Some	<a href="mailto:some3@un.org">some3@un.org</a>	0710602739

Garissa	UNICEF	Hussein Golicha	<a href="mailto:hgolicha@unicef.org">hgolicha@unicef.org</a>	0722206167
Garissa	Islamic Relief	Nicholas Otieno	<a href="mailto:nicholas.otieno@islamic-relief.or.ke">nicholas.otieno@islamic-relief.or.ke</a>	721565612
Garissa	<i>OCHA (support from Dadaab Sub Office)</i>	Zeljko Nikolic / Julius Lenanyoikie	<a href="mailto:nikolich@un.org">nikolich@un.org</a> / <a href="mailto:lenanyokie@un.org">lenanyokie@un.org</a>	0732500024 / 0720584980
Lodwar	OCHA	Joseph Akure	<a href="mailto:akure@un.org">akure@un.org</a>	0722439546

DRAFT